



MARCH

# NEWSLETTER

## A Note from the Director

Dear Parents,

It is our blessing and privilege to partner with parents in our community teaching and training their children. We are dedicated to laying a strong foundation of learning by providing opportunities for children to develop skills that encourage and equip each child for a lifetime of learning and growing into the unique individuals God has created them to be. We appreciate the opportunity to partner with you and thank you for the trust and support you extend to us!

**Registration for 2024-2025 is off to a great start!** There are still a few openings, but, they are filling fast. Registration information is available online at: [gemexpress.org](http://gemexpress.org). You can earn a \$25 tuition voucher for each family you refer to GEM. In order to receive a tuition voucher the family you refer must complete the registration process and include your name in the referral section of the registration form. Thanks for your support!

Please refer to the "24 Hour Policy", found on page 31 in the '23-'24 GEM Student Handbook, regarding when staff and students may return to school after an illness. Before returning to GEM after an illness, staff and students must go 24 hours without fever (without fever reducing medicine), diarrhea or vomiting. We appreciate your assistance in adhering to these guidelines as we strive to minimize the spread of communicable diseases at GEM.

One of the best ways you as parents can support your child's learning is by reading to your child regularly. Set aside just 10-15 minutes a day to read with your child and reap the benefits. Benefits and book recommendations listed on page 2.

Enjoy reading to your children when they are young and develop lifelong readers!

We are looking forward to celebrating Easter with GEM students on Wednesday, 3/27 or Thursday, 3/28. Chapel will include the gospel story of God's great love for us and the gift of salvation available to all through Jesus!

Each class will also participate in an Easter Egg Hunt and teachers will coordinate any special Easter activities with Room Parents. School is closed Friday, 3/29 for Good Friday.

Grace Church is hosting a family Easter event Saturday, 3/30 from 9am-12pm complete with a walk-through Easter story, grab and go breakfast, egg hunt, and games. Make plans to join us!

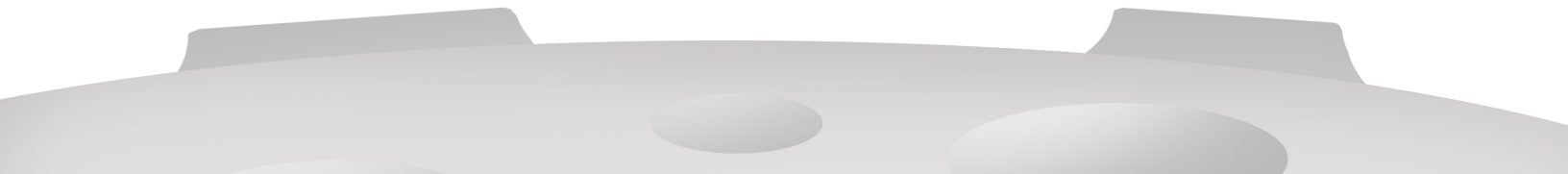
Go to [grace-efc.org](http://grace-efc.org) to register for a 1 hour time slot.

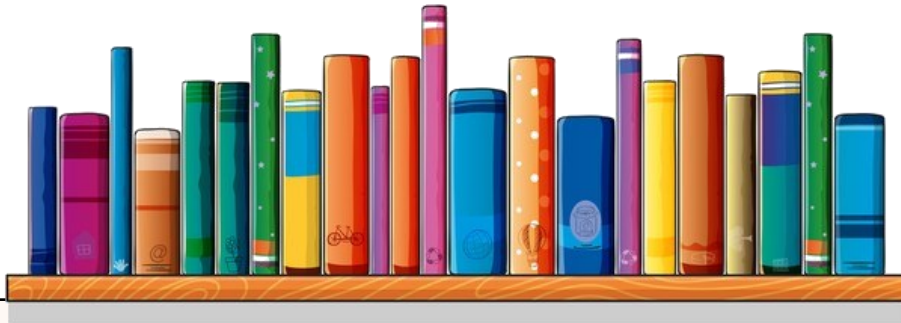
In His Service,  
Diana Abbott  
Director



"For God so loved the world, that he gave his one and only son, so that whoever believes in Him shall not perish but have eternal life."

John 3:16





## Reading Benefits and Book Recommendations

Benefits of reading aloud to your child daily include:

- Expanding their vocabulary
- Stimulating their imagination
- Expanding their understanding of the world
- Developing listening skills
- Encouraging brain development-the more you read to your child, the more the neurons in their brain will grow and connect!
- Encouraging development of their attention span
- And so much more!

GEM classroom favorites include:

- An Elephant & Piggie Book “We Are in a Book” by Mo Willems
- “There’s a Dragon in Your Book” by Tom Fletcher
- “The Big Umbrella” by Amy June Bates
- “The Book with No Pictures” by B. J. Novak
- “The Very Hungry Caterpillar” by Eric Carle
- “Impulsive Ninja” by Mary Nhin
- “Goatlocks and the 3 Bears” by Erica S. Perl
- “Splash-N-Dash Carwash” by Hayley Hangartner
- “Pete the Cat and the Perfect Pizza Party” by Kimberly James Dean



## SPRING BREAK BUCKET LIST

- |   |   |
|---|---|
| <input type="checkbox"/> Pick and press wildflowers | <input type="checkbox"/> Paint rocks                |
| <input type="checkbox"/> Go fishing                 | <input type="checkbox"/> Camp in the backyard       |
| <input type="checkbox"/> Build a pillow fort        | <input type="checkbox"/> Fly a kite                 |
| <input type="checkbox"/> Read                       | <input type="checkbox"/> Go on a nature walk        |
| <input type="checkbox"/> Play Frisbee at the park   | <input type="checkbox"/> Watch the sunset           |
| <input type="checkbox"/> Make popsicles             | <input type="checkbox"/> Make lemonade              |
| <input type="checkbox"/> Go on a picnic             | <input type="checkbox"/> Have a board game night    |
| <input type="checkbox"/> Play hopscotch             | <input type="checkbox"/> Make a card for a neighbor |



# 2024-2025 REGISTRATION OPEN

## STAFF BIRTHDAYS

3/7  
Moriah Leraas

3/9  
Lydia Goodroe

3/9  
Regan Palacios

## SPOTS ARE FILLING FAST!



Preschool & Kindergarten

ACCREDITED

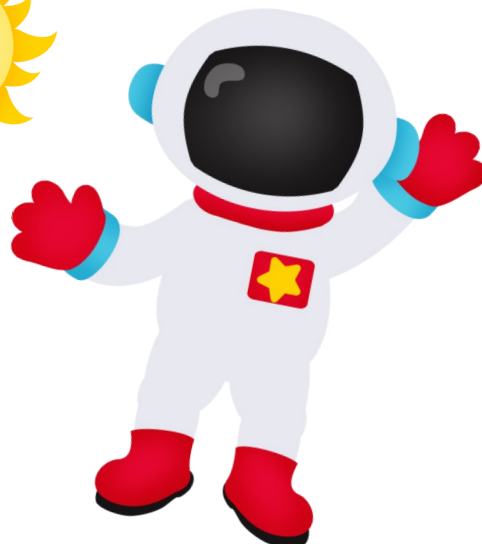
[gemexpress.org](http://gemexpress.org)

NO MORE CLIPPING



SCAN  
YOUR RECEIPT

SEE HOW AT  
[BTFE.COM](http://BTFE.COM)



## RaiseRight™

Simply the right way to fundraise

Support GEM as you do your everyday shopping. Order gift cards that you would use on regular purchases, upcoming travel, or to give as gifts.

If you're not using Raise Right yet, sign up today! Scan the QR code or download the Raise Right app and use enrollment code: **2F3AL97C43612**.



# Grace Kids CORNER

Check out the Grace website for the Grace Kids Camp catalog. Scan the QR code to get a peek at some of the fun we had last summer. Camps will occur the week of June 24<sup>th</sup> and July 15<sup>th</sup> 9am to noon. Registration will be open in March 7th at 8am, exact details will be emailed from me a few days prior to it launching. Join us Sunday mornings at 9am and 10:45am.

Stephanie Connon  
 Grace Children's Ministry Director  
 stephanie@grace-efc.org



gemexpress.org  
 2005 Estates Pkwy  
 Lucas, TX 75002  
 972-727-0071  
 diana@grace-efc.org

# MARCH

SUN	MON	TUE	WED	THU	FRI	SAT
					1	2
3	4 	5 	6 	7 	8 	9
10	11 	12 	13 	14 	15 	16
17	18 	19	20	21	22	23
PARENT APPRECIATION WEEK!						
24/31	25	26	27 	28 	29 	30